

CHA CHA CHA

♩=118

SMOOTH

AS RECORDED ON 'SUPERNATURAL'(1999)

BASS: BENNY RIETVELD

INTRO

First staff of the Intro section, measures 1-4. The music is in bass clef with a 4/4 time signature. It begins with a whole rest, followed by a series of eighth and quarter notes.

Second staff of the Intro section, measures 5-8. The music continues with eighth and quarter notes, including some beamed eighth notes.

VERSE 1

First staff of Verse 1, measures 9-13. The music features a mix of eighth and quarter notes with some accents.

Second staff of Verse 1, measures 14-17. The music continues with eighth and quarter notes, including a sharp sign on a note in the second measure.

Third staff of Verse 1, measures 18-21. The music continues with eighth and quarter notes, including a sharp sign on a note in the second measure.

Fourth staff of Verse 1, measures 22-25. The music continues with eighth and quarter notes, including a sharp sign on a note in the second measure.

BRIDGE

First staff of the Bridge section, measures 26-29. The music features eighth and quarter notes with a more complex rhythmic pattern.

Second staff of the Bridge section, measures 30-32. The music continues with eighth and quarter notes.

Third staff of the Bridge section, measures 33-35. The music continues with eighth and quarter notes, including a sharp sign on a note in the second measure.

CHORUS

First staff of the Chorus section, measures 36-39. The music features eighth and quarter notes with a consistent rhythmic pattern.

Second staff of the Chorus section, measures 40-43. The music continues with eighth and quarter notes, including a sharp sign on a note in the second measure.

44

INTERLUDE

Musical staff for Interlude starting at measure 44. The staff contains a sequence of notes and rests, including a key signature change to one sharp (F#) at the end of the line.

48

VERSE 2

Musical staff for Verse 2 starting at measure 48. The staff contains a sequence of notes and rests, including a key signature change to one sharp (F#) at the end of the line.

52

Musical staff for Verse 2 starting at measure 52. The staff contains a sequence of notes and rests, including a key signature change to one sharp (F#) at the end of the line.

56

Musical staff for Verse 2 starting at measure 56. The staff contains a sequence of notes and rests, including a key signature change to one sharp (F#) at the end of the line.

60

Musical staff for Verse 2 starting at measure 60. The staff contains a sequence of notes and rests, including a key signature change to one sharp (F#) at the end of the line.

64

BRIDGE

Musical staff for Bridge starting at measure 64. The staff contains a sequence of notes and rests, including a key signature change to one sharp (F#) at the end of the line.

68

Musical staff for Bridge starting at measure 68. The staff contains a sequence of notes and rests, including a key signature change to one sharp (F#) at the end of the line.

72

Musical staff for Bridge starting at measure 72. The staff contains a sequence of notes and rests, including a key signature change to one sharp (F#) at the end of the line.

74

CHORUS

Musical staff for Chorus starting at measure 74. The staff contains a sequence of notes and rests, including a key signature change to one sharp (F#) at the end of the line.

78

Musical staff for Chorus starting at measure 78. The staff contains a sequence of notes and rests, including a key signature change to one sharp (F#) at the end of the line.

83

SOLO

Musical staff for Solo starting at measure 83. The staff contains a sequence of notes and rests, including a key signature change to one sharp (F#) at the end of the line.

87



91



95



98



101

CHORUS



104



106



109

OUTRO



113



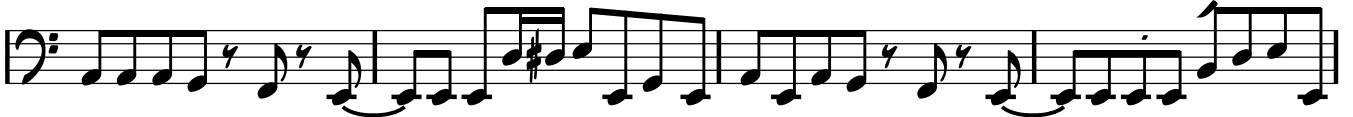
117



121



125



129



131



133



137

